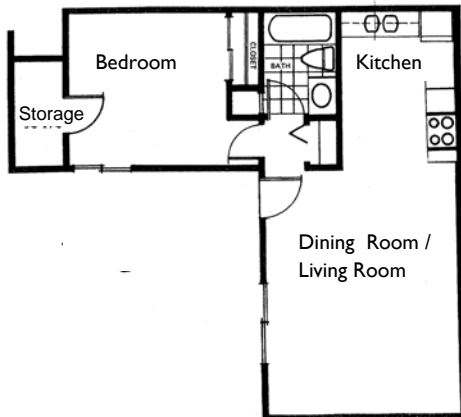


Walnut Park is a beautifully landscaped complex featuring easy walking paths and indoor and outdoor entertainment areas. All utilities except phone and cable TV are included in rent. Eligible applicants must meet HUD requirements. Income limits apply.

Walnut Park Floor Plan



*Serving the Community By Making Safe
Housing Affordable*



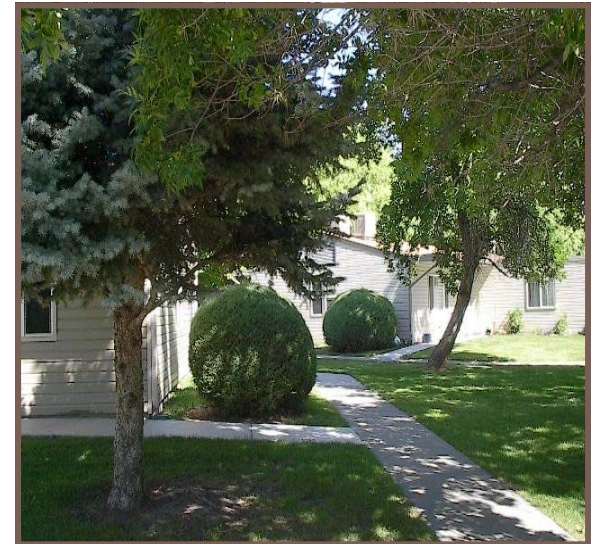
GRAND JUNCTION HOUSING
AUTHORITY

1011 N. 10th Street
Grand Junction, CO 81501

(970) 245-0388
(TTY) Dial 711 or 1 (800) 842-9710
www.gjha.org

WALNUT PARK

2236 North 17th Street, Grand Junction, CO



Walnut Park Apartments

Walnut Park has 78 one-bedroom ground level apartment homes arranged in clusters of four in a park-like setting. Each apartment has 586 square feet. Located at 17th Street and Walnut Avenue, the complex is close to grocery stores, churches, hospitals, parks and doctors offices.



Mailboxes located on front of community building for easy 24 hour access.

Street and area lights provide ample outdoor lighting.

On-Site Service Coordinator

The Service Coordinator assists tenants with supportive services necessary to live an independent

Fun and Socializing:

- Monthly tenant potlucks
- Bingo on Friday
- Monthly Tenant Association Meetings
- Weekly Shopping Bus



Gazebo

Services Offered:

- Monthly Supplemental Food Program
- Quarterly TEFAP Food Distribution
- Library Book Van every other Tuesday

On site Manager available Monday through Friday.

24-hour emergency Maintenance.



Meeting/Common Room

Maintenance Staff on-call 24 hours a day, 7 days a week.

Office Hours:

Monday - Friday
8:00 a.m. to 5:00 p.m.

Visit www.gjha.org to view pictures and download Walnut Park application.